



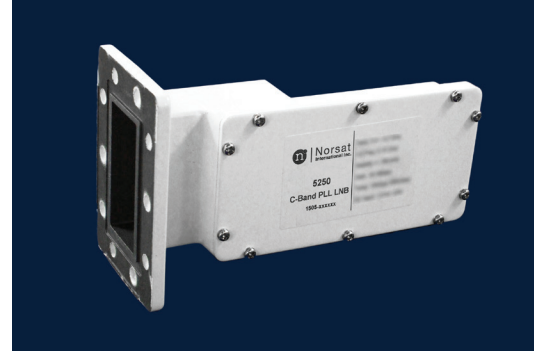
LNB

C-BAND PLL

5200

SPECIFICATIONS

| | |
|---------------------------------------|--|
| Noise Temperature | 15K typ., 30K max. at room temp. @ CF |
| L.O. Stability | ± 150 KHz, ± 250 KHz |
| Phase Noise (SSB) max. | -65 dBc/Hz at 1 kHz -80 dBc/Hz at 10 kHz -95 dBc/Hz at 100 kHz |
| Input VSWR | 2.5 : 1 max. |
| Output VSWR | 2.5 : 1 max. |
| Gain | 62 dB typ., 55 dB min., 70 dB max. |
| Gain Flatness (over full band) | ≤ 5 dB p-p |
| Output P1dB | + 5 dBm min. |



| | |
|-------------------------------|---|
| DC Power | + 12V to + 24V DC |
| Current | 250 mA max. |
| Input (waterproof) | CPR 229G waveguide grooved |
| Output (waterproof) | F-Connector (75 Ohm) N-Connector (50 Ohm) |
| Dimensions (L x W x H) | 190 mm x 115 mm x 78 mm (7.1 in x 4.0 in x 2.8 in) |
| Weight | 580 g (20.45 oz) |
| Operating Temperature | - 40 to + 60°C |
| Storage Temperature | - 50 to + 70°C |

FREQUENCY BANDS

| | |
|-----------------------------|------------|
| Frequency Band (GHz) | 3.4 - 4.2 |
| L.O. Frequency (GHz) | 5.15 |
| IF Frequency (MHz) | 950 - 1750 |

HOW TO ORDER

5250F



F - 75 Ohm
N - 50 Ohm

15: ±150 kHz
25: ±250 kHz

MECHANICAL DIAGRAM

