

# TI Filter, Ku Band Bandpass Filter (10.95 - 12.75GHz)



Your Trusted Source for Satellite Equipment

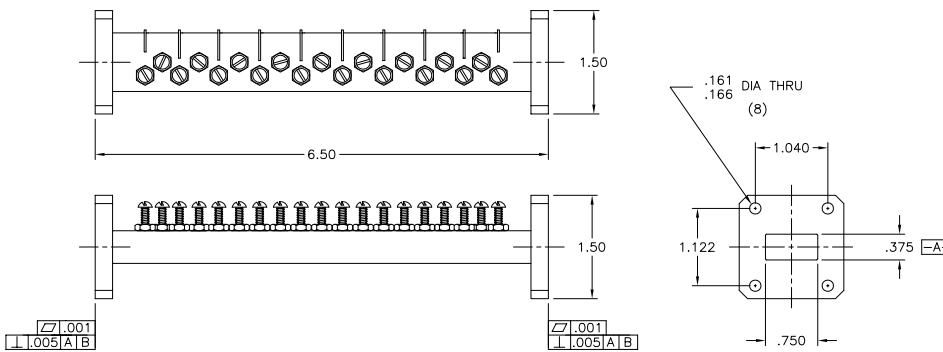
True “bandpass” characteristics make this filter the choice to reject interference from the transmit band above and potential interference from sources below the operating band, making it more versatile than a simple transmit reject filter.



FLT-MFC16709

## Specifications:

Passband:	10.95 - 12.75 GHz
Insertion Loss:	0.5 dB Max
Passband VSWR:	1.2:1 Max
Rejection:	50 dB Min at 14.0-14.5 GHz 50 dB Min from 10.40-10.60 GHz
Pressurization:	Sealed to 5 PSIG
Flanges:	WR75 Cover



FLT-MFC16709\_REV002

Specifications are subject to change without notice

sales@vikingsatcom.com • www.vikingsatcom.com

T: 517.629.3000 • F: 517.629.2379 • 704 North Clark Street • Albion, MI