



- has simple structure, compact and delicate structure design;
- highly positioning accuracy and reliability;
- flexible, fast, stable start and stop, and easy to control and operate.;



Uranous Ride Light-Duty Intelligent Dual Sensor Thermal Imaging Camera

Model: GSM0516A

Model	AGT-ARTN1016
Thermal Device	
Detection	Vehicle: 8600m; Human: 3400m
Identification	Vehicle: 2400m; Human: 1000m
Sensor	5th generation FPA VOx Detector
Resolution	640 x 512
Spectral range	7.5~14μm
NETD	50mK (@25°C F1.0)
Focal length	100mm, electrical zooming
Field of view	6.2° × 5°
Image Processing	<ol style="list-style-type: none"> 1. Image enhancement: SDE digital image processing enhancement technique, increase image details. 2. Image polarity: Hot-black/hot-white dual polarity. 3. Image parameter: AGC automatic gain control, brightness and contrast. 4. Digital zoom: 2X, 4X. 5. NUC Correction: Auto/Manual correction. 6. Scene mode: support multi-configuration scene, adapt to different environment application. 7. Hot-point alert: High-temp target indicator warning.
Low-Light-Level Imaging	
1. Sensor: Ultra-low CMOS illumination	

2. Illumination: 0.002Lux
3. Lens focusing: 40mm
4. Features: 3D noise reduction, auto electronic shutter, wider dynamic..

Laser Rangefinder

1. Measuring range: 50 - 3000m; 5000m@larger target (visibility >20km, reflectivity >23%)
2. Accuracy: $\pm 1\text{m}$;
3. Frequency: 15ppm;
4. Laser wavelength: 1.55um (eyes safe);
5. Ranging efficiency: $\geq 98\%$

GPS/Electronic Compass

1. GPS: Positioning accuracy CEP $\leq 5\text{m}$
2. 3D Compass: positioning accuracy $\leq \pm 0.5^\circ$

Display

1. Panel: OLED screen, binocular;
2. Pixels: 800 x 600
3. Concealment: with blindfold, highly concealment;
4. Screen dormancy: proximity sensing, auto screen switching.
5. WIFI real-time transmission, browsing, video recording and photo taking by mobile APP

Storage

1. Video format: 704 \times 576@50hz , MP4
2. Storage medium: build-in 32G storage;
3. Capacity: photo taking and video recording, 12 hours MP4 format video
4. Video export: USB2.0

Power Supply

1. Build-in battery: rechargeable lithium batteries 18650 \times 2 , 7.4V 3000 mAh
2. Continuous working hours: >5 hours
3. External power supply: DC8V - 12V

Housing

1. Material: Integral aluminum alloy casing, stainless steel parts;
2. Structure: ergonomic design, double-hand 4 key buttons;

Interface

1. Video interface: 1-channel of PAL video output, i-channel of USB2.0 data export;
2. Power supply interface: DC8V - 12V, largest current 4A;

3. Interface : aviation waterproof connector.

Power Consumption

1. Total consumption: <15W
2. Total weight: 2.8kg (battery included)
3. Dimension: 255 x 230 x 103mm

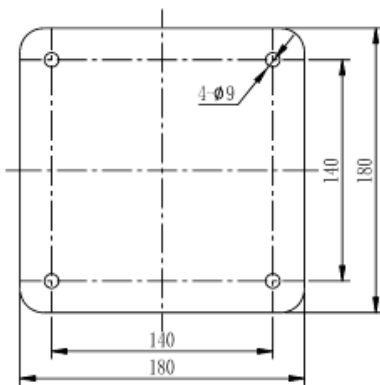
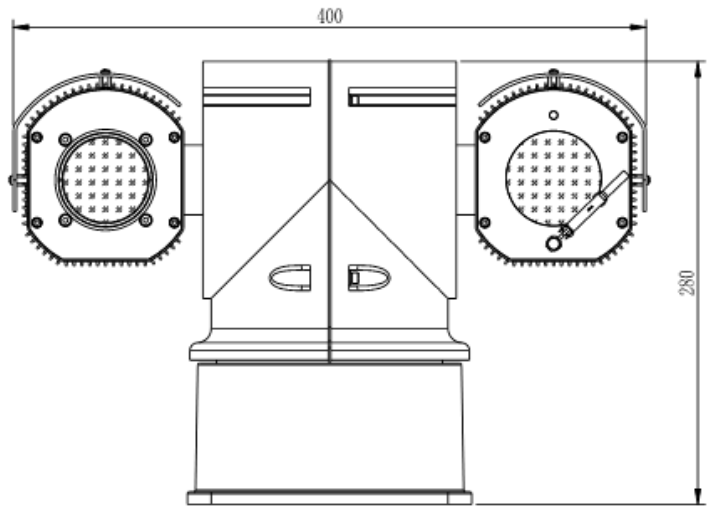
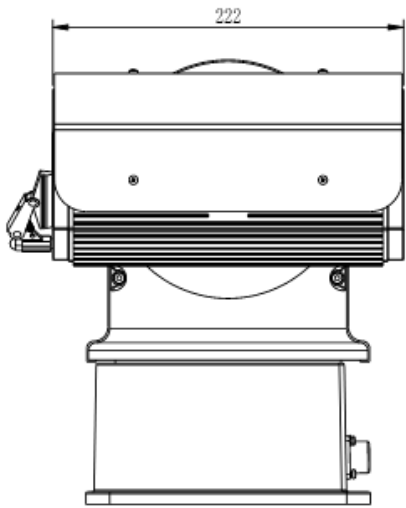
Environmental Index

1. Working temperature: -40°C ~ +55°C;
2. Storage Temperature: -45°C ~ +60°C;
3. Humidity: <90%RH;
4. Protection Level: IP67

Accessories

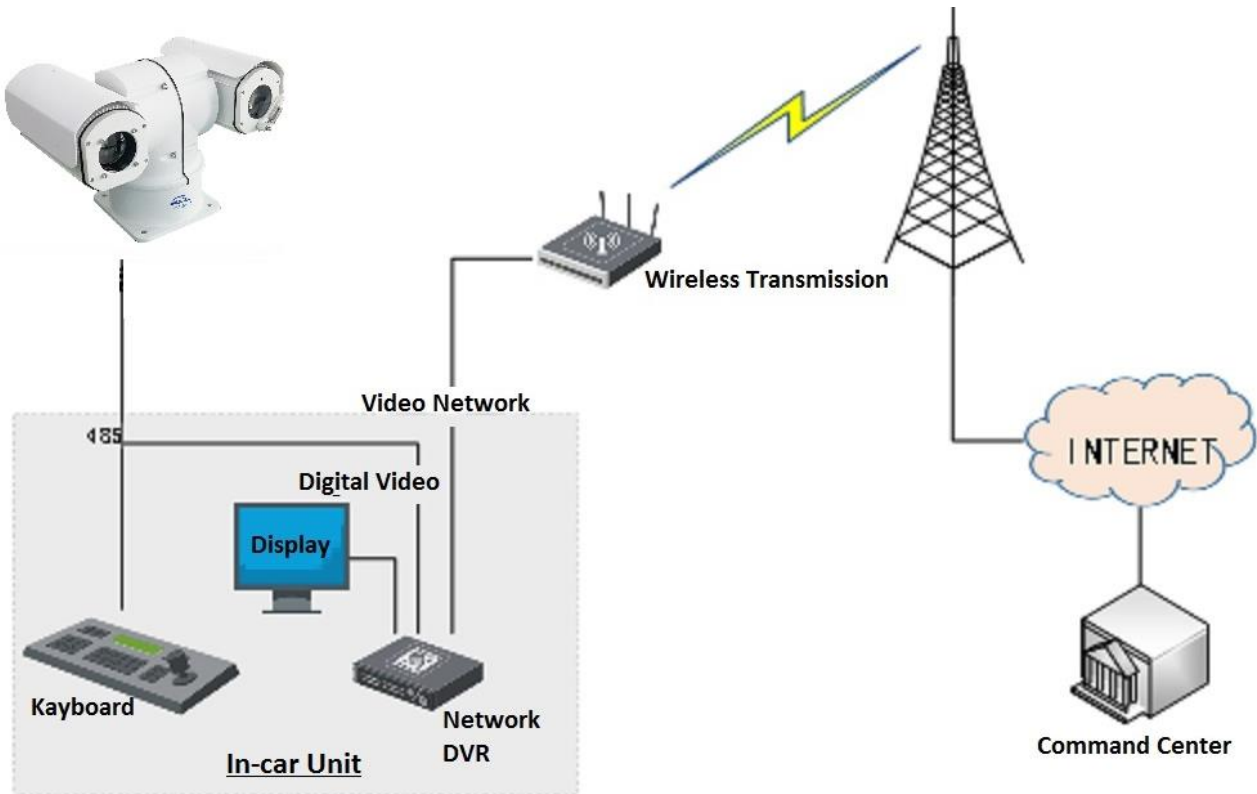
1. Packing case: hand-carry moisture-proof casing;
2. Cable: power cable, video output and USB cables;
3. Lithium Batteries: 4 pieces;
4. Charger: current charger;
5. Tripod (optional).

Mechanical Diagram (Unit: inch (mm))

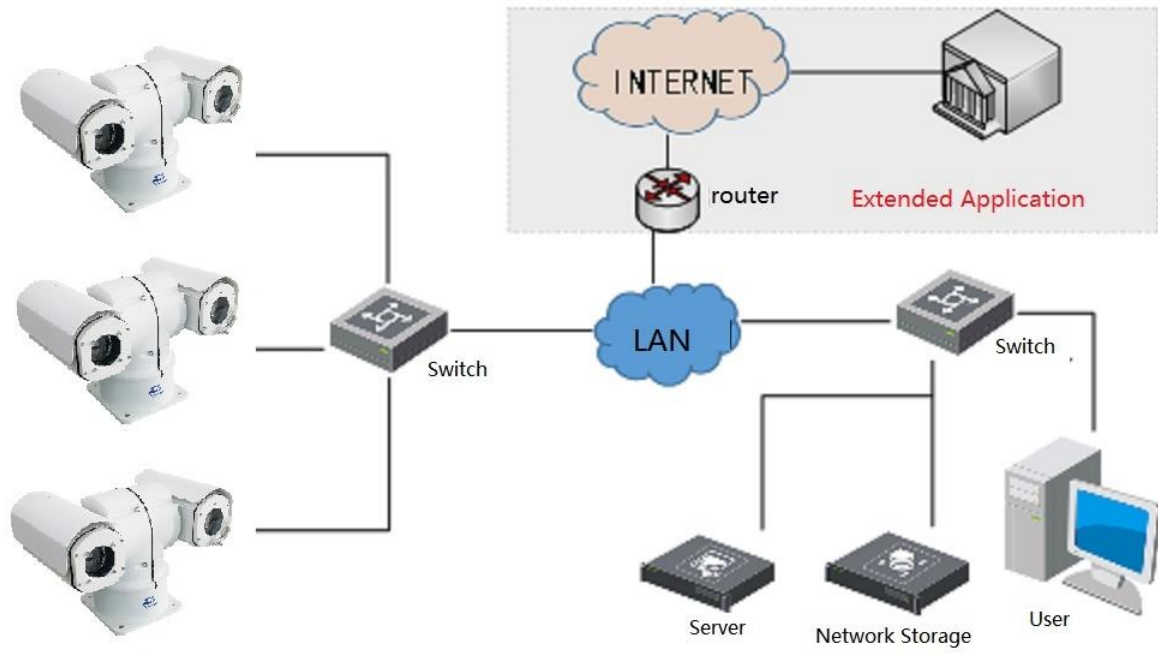


Unit: mm

①



Vehicle Mounted Application



Networked Intelligent Application