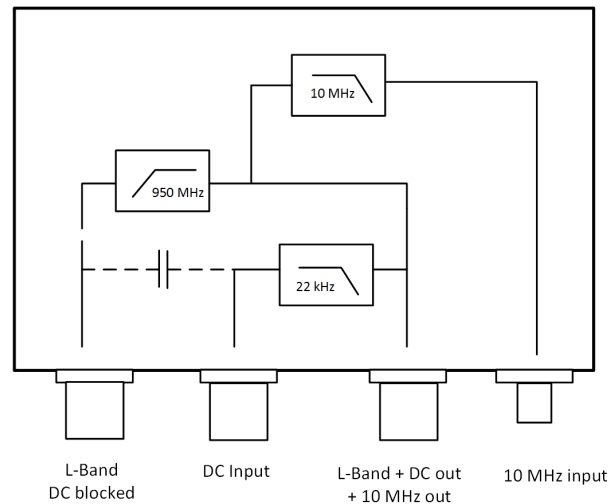
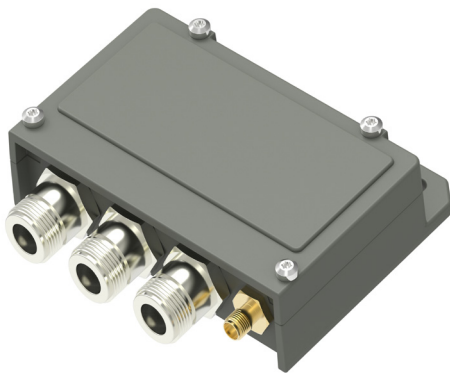


10 MHz Diplexer & DC Inserter

Diplexer for insertion of 10 MHz and DC with bypass of 22 kHz

The L-Band DC Inserter (LNB) / 10 MHz diplexer (LNB or BUC) is used when an external 10 MHz reference signal input is needed for an LNB or BUC. Recommended to use with SMW 10 MHz ref. oscillator or another 10 MHz signal source.

Separate DC insertion (max. 1A) via connector or DC cable (pigtail).



TECHNICAL SPECIFICATIONS

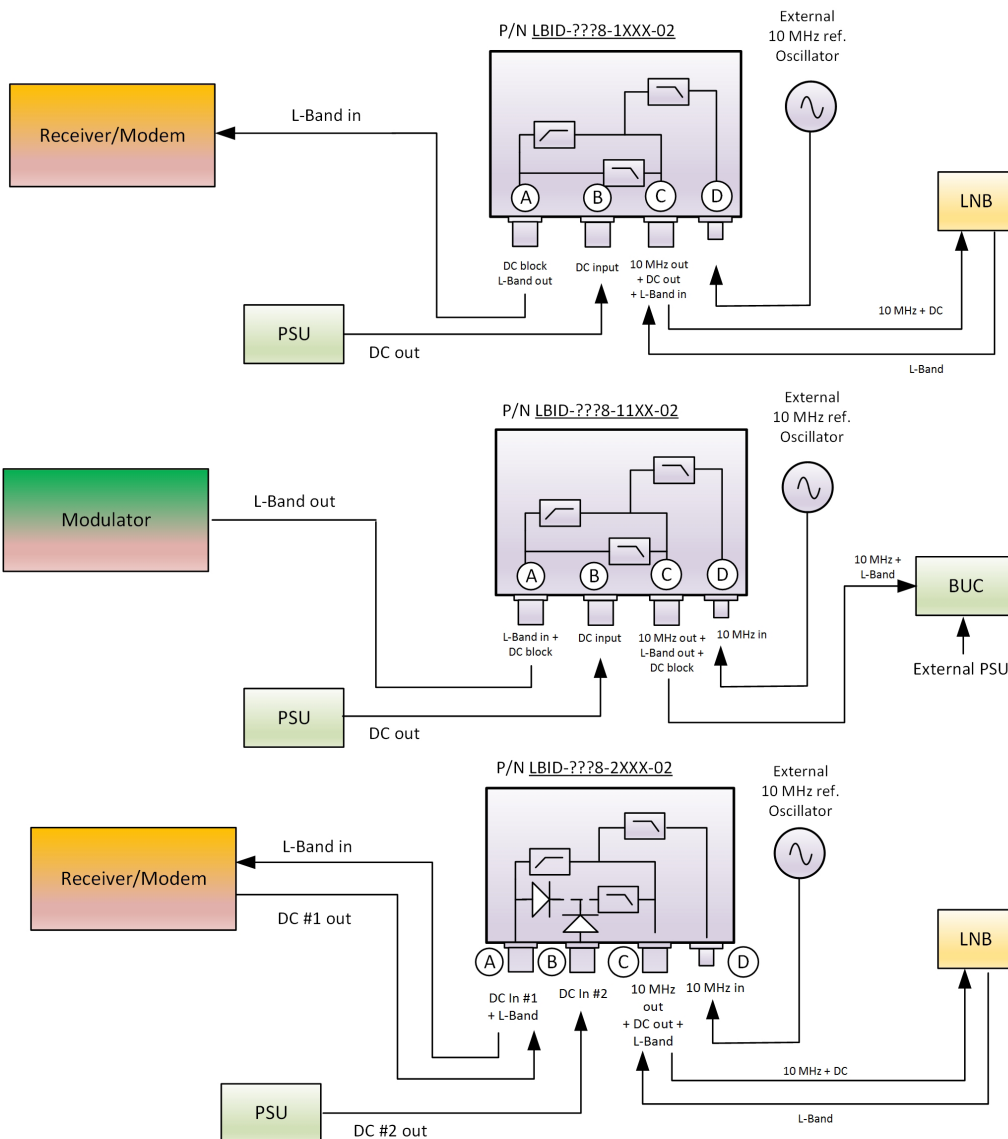
MODEL:	LBID - 10 MHz Diplexer / DC Inserter
L-Band Frequency Range	950 - 2150 MHz
DC Input	+13 to +28 V
Maximum Load	1 A
IF Insertion Loss	1 dB @ 950-2150 MHz max.
Return Loss 10 MHz Input	> 20 dB
Return Loss 10 MHz Output	> 20 dB
Return Loss L-band Input / Output	N- and SMA-connector: min. 10dB, typ. 15 dB, with F connector min. 8dB, typ. 13 dB
10 MHz Harmonic Suppression	> 70 dBc @ L-Band output, > 40 dBc @ separate 10 MHz output
Temperature Range	-40 to +80°C
Ingress Protection Code	IP 67
Connectors	F-type 75Ω / N-type 50Ω / SMA-type 50Ω
Dimensions	96 x 28 x 89 mm (N connectors) (for drawing, see www.smw.se)
Weight	209 g (F & SMA connectors), 249 g (N connectors)
22 kHz Bypass	Through receiver or external source, n/a with DC Block IN or OUT
Options	Connector L-Band & DC F, N or SMA type, Pigtail 2m for DC input

Rev.10-20-4B

Above parameters are generic product family values. For part number specific min./max. values, please consult us.

Specifications are subject to change without notice. Products from Swedish Microwave AB are made for commercial use.

10 MHz Diplexer & DC Inserter examples



Part number designation for the 10 MHz Diplexer & DC Inserter

Model	Connector A		Sep. DC input B		Connector C		10 MHz in		DC Block A	DC Block C	Future use	Future use	Version
LBID	?		?		?		8		?		X	X	02
	0	F	X	No	0	F	8	SMA (only)	X	No DC block			
	5	N	0	F	5	N			1	DC Block			
	8	SMA	5	N	8	SMA			2	DC in A + B			
			8	SMA									
			9	Pigtail									

Example: L-Band out + DC Block (N), DC input (Pigtail), L-Band in + 10 MHz + DC out (N), 10 MHz in (SMA) = **LBID-5958-1XXX-02**

Rev. B

Rev.10-20-4B