



# MFC

**Microwave Filter Company, Inc.**

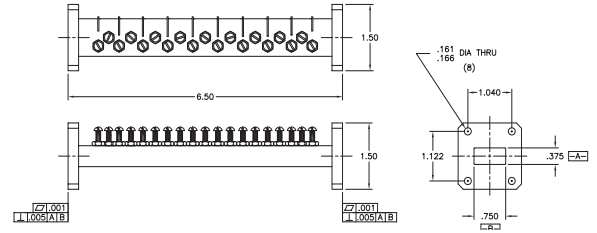
*Creating Filters and Components to 50 Ghz for Over 50 Years!*

True "bandpass" characteristics make this filter the choice to reject interference from the transmit band **above** and potential interference from sources **below** the operating band, making it more versatile than a simple transmit reject filter.



**Specifications:**

Passband:	10.95 - 12.75 GHz
Insertion Loss:	0.5 dB Max
Passband VSWR:	1.2:1 Max
Rejection:	50 dB Min from 14.0-14.5 GHz 50 dB Min from 10.40-10.60 GHz
Pressurization:	Sealed to 5 PSIG
Flanges:	WR75 Cover
Weight:	0.52 lbs (0.2 Kg)
Dimensions:	6.5" x 1.5" x 1.5" (165mm x 38mm x 38mm)
Finish:	Gloss White Polyurethane



**Ku-Band Multi-Purpose Receive Filter**  
Model 16709 Series DWG \ 16638

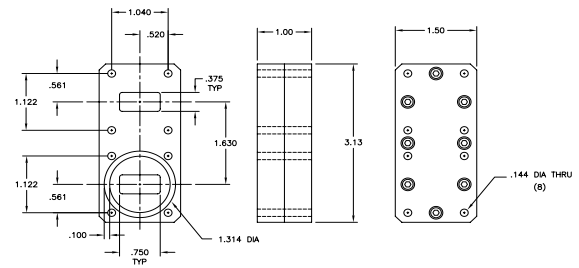
## ***Ku-Band TRF - Collinear Flange Mount*** Model 16638

This specially-configured, transmit reject filter is ideal for applications requiring "same plane" installation of the LNB and feedhorn. Other custom configurations are available upon request.



**Specifications:**

Passband:	10.95 - 12.75 GHz
Insertion Loss:	0.2 dB Max
VSWR:	1.30:1
Rejection:	-45 dB Min at 14.0 - 14.50 GHz
Flanges:	WR75 Cover WR75 Grooved
Weight:	0.14 lbs (0.06 Kg)
Dimensions:	3.13" x 1.5" x 1.0" (79mm x 38mm x 25mm)
Finish:	Chem Film, AMS-C-5541, Class 3



**All MFC Products Designed and Manufactured in the USA**



**E-Mail: Sales@iktechcorp.com**