



# MFC

Microwave Filter Company, Inc.

Creating Filters and Components to 50 Ghz for Over 50 Years!

These bandpass filters isolate these telemetry bands from other surrounding L-band operations.

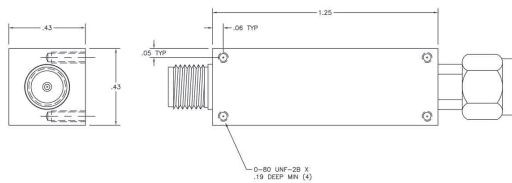
**Typical Applications:**

- Radio Astronomy
- Meteorological Satellite Services

## Model 18758

**Specifications:**

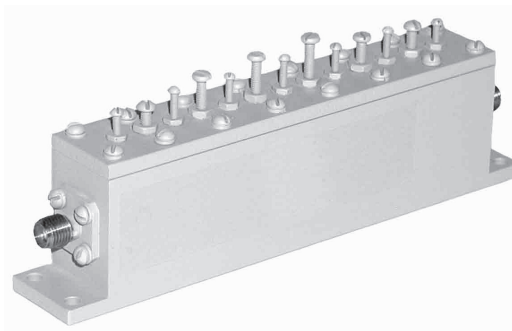
Center Frequency (Fo):	1680 MHz
Insertion Loss @ Fo:	2.5 dB Typ; 3.0 dB Max
VSWR @ Fo:	1.43:1 Typ
Relative Bandwidth (3 dB):	70 MHz Typ
Rejection:	45 dB Min @ 1600 / 1780 MHz 80 dB Min from DC-1500 MHz 80 dB Min from 1950-3000 MHz
Impedance:	50 ohms
Connectors:	SMA-female (In) / SMA-male (Out)
Dimensions:	1.25" x 0.43" x 0.43" (32mm x 11mm x 11mm)



## Model 18759

**Specifications:**

Center Frequency (Fo):	1675 MHz
Insertion Loss @ Fo:	2.0 dB Typ
Passband VSWR:	1.5:1 Max
Relative Bandwidth (1 dB):	50 MHz Min
Rejection:	20 dB Typ @ Fo +/- 36 MHz 50 dB Typ @ Fo +/- 52 MHz
Impedance:	50 ohms
Connectors:	SMA-female



All MFC Products Designed and Manufactured in the USA



E-Mail: [Sales@iktechcorp.com](mailto:Sales@iktechcorp.com)

L-Band Telemetry Bandpass Filter  
Models 18758 & 18759