

Creating Filters and Components to 50 Ghz for Over 50 Years!

Ka-Band Transmit Reject Filter  
Model 18811

This TRF provides deep rejection of the transmit (Ka)band with minimal effect on the receive (K) band.

- Full service (commercial & military) K-band reception
- Alternate Flange Configurations are Available Upon Request

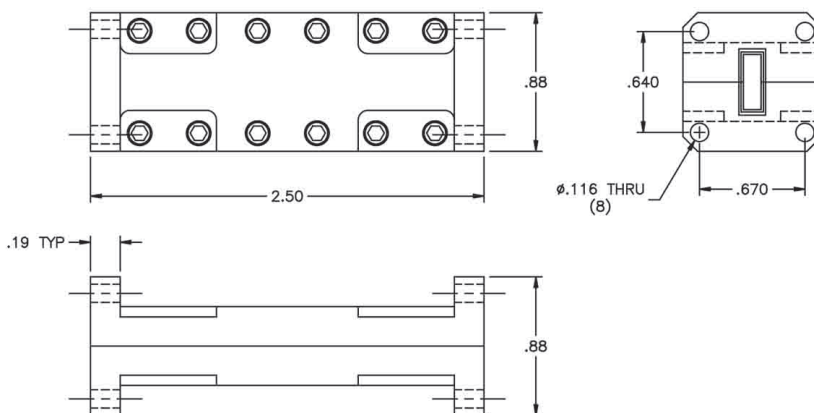


**Specifications:**

Passband:	17.7 - 22 GHz
Passband Insertion Loss:	0.10 dB Typ
Passband VSWR:	1.17:1 Typ
Reject Band:	27.5 - 31 GHz
Rejection:	90 dB Typ; 85 dB Min
Temperature Range:	-40°C to +75°C
Flanges:	See chart below
Dimensions:	2.50" x 0.88" x 0.88" (63.5 mm x 22 mm x 22 mm)
Finish:	Gloss White Polyurethane

**Flange Configurations**

Model #	Input	Output
18811	WR42 Cover	WR42 Cover
18811-1	WR42 Grooved	WR42 Grooved
18811-2	WR42 Cover	WR42 Grooved
18811-3	WR42 Grooved	WR42 Cover



All MFC Products Designed and Manufactured in the USA



E-Mail: [Sales@iktechcorp.com](mailto:Sales@iktechcorp.com)