



# MFC

Microwave Filter Company, Inc.

Creating Filters and Components to 50 Ghz for Over 50 Years!

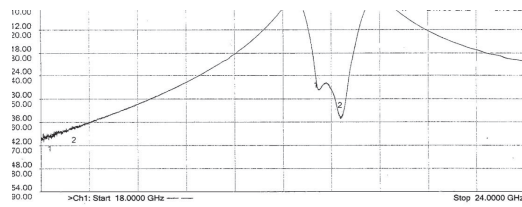
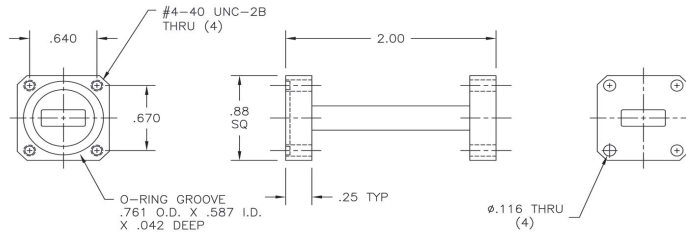
K-Band Receive Bandpass Filter  
Model 19093

This filter passes the Satcom receive band (21.4 - 21.7 GHz) while suppressing all other lower frequencies down to DC.

- Provides deep rejection of the Satcom transmit band (18.1 - 18.4 GHz)
- Provides deep rejection of the DBS transmit band (17.3 - 17.8 GHz)

### Specifications:

Passband:	21.4 - 21.7 GHz
Passband Insertion Loss:	0.3 dB Max
Passband VSWR:	1.3:1 Max
Stopband:	DC -18.4 GHz
Stopband Attenuation:	60 dB Min
Flanges:	WR42 Grooved (Input) WR42 Cover (Output)
Dimensions:	2.00" x 0.88" x 0.88" (51 mm x 22 mm x 22 mm)
Finish:	White Lacquer
Alternate flange configurations are available upon request.	



All MFC Products Designed and Manufactured in the USA



E-Mail: [Sales@iktechcorp.com](mailto:Sales@iktechcorp.com)