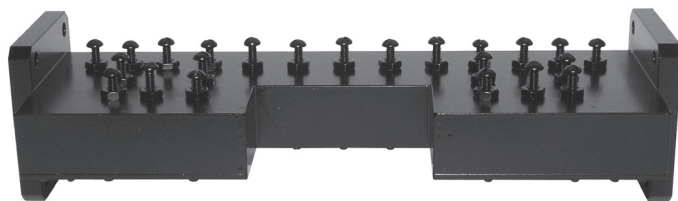


Creating Filters and Components to 50 Ghz for Over 50 Years!

By utilizing hybrid design techniques, the model 19170 receive band filter is able to achieve extremely low through loss with deep transmit band rejection.

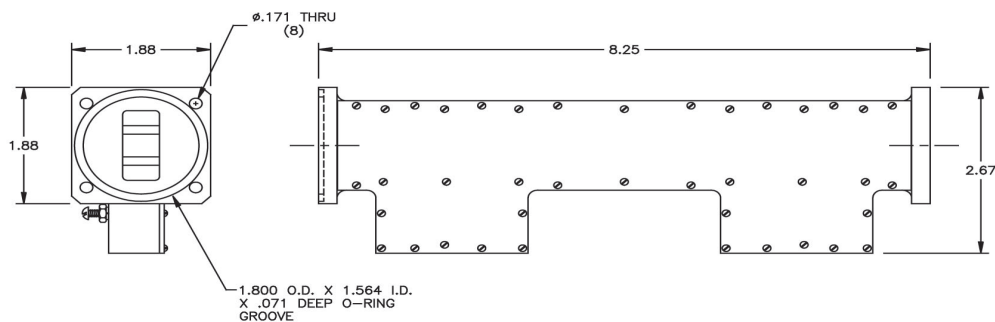


Specifications:

Passband:	7.25 - 7.75 GHz
Passband Loss:	0.3 dB Typ
Passband Return Loss:	20 dB Typ
Rejection:	90 dB Min from 7.9 - 8.4 GHz
Flanges:	See chart
Operating Temp. Range:	-10°C to +65°C
Weight:	0.75 lbs (0.34 Kg)
Dimensions:	8.25" x 1.88" x 2.67" (210mm x 48mm x 68mm)
Finish:	Flat Black Lacquer

Flange Configurations

Model	Input Flange	Output Flange
19170	WR112 Cover	WR112 Cover
19170-1	WR112 Grooved	WR112 Cover



All MFC Products Designed and Manufactured in the USA



E-Mail: Sales@iktechcorp.com

X-Band Transmit Reject Filter
Model 19170