

China Starwin Ka Band ESA Terminal Datasheet



Starwin is going to develop Ku and Ka band electronically steering phased array terminal with unique performance multi-function chipset-Steerwin ESA, addressing the need of high speed tracking, high integration, high reliability, lower profile etc, delivering fully smart & economical VSAT terminal solution - for Land (Fixed Platform)-Mobile (Vehicle & T rain), Maritime(Vessels) and Aero(Airplane and UAV) application.

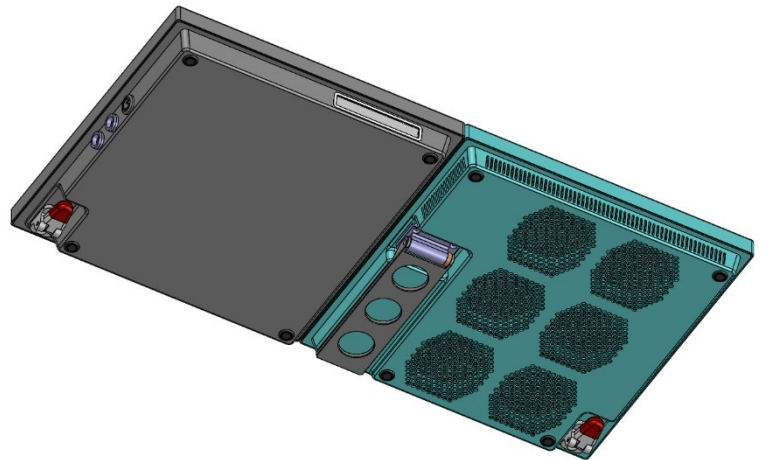
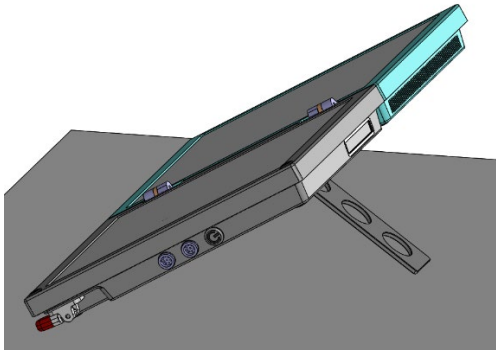
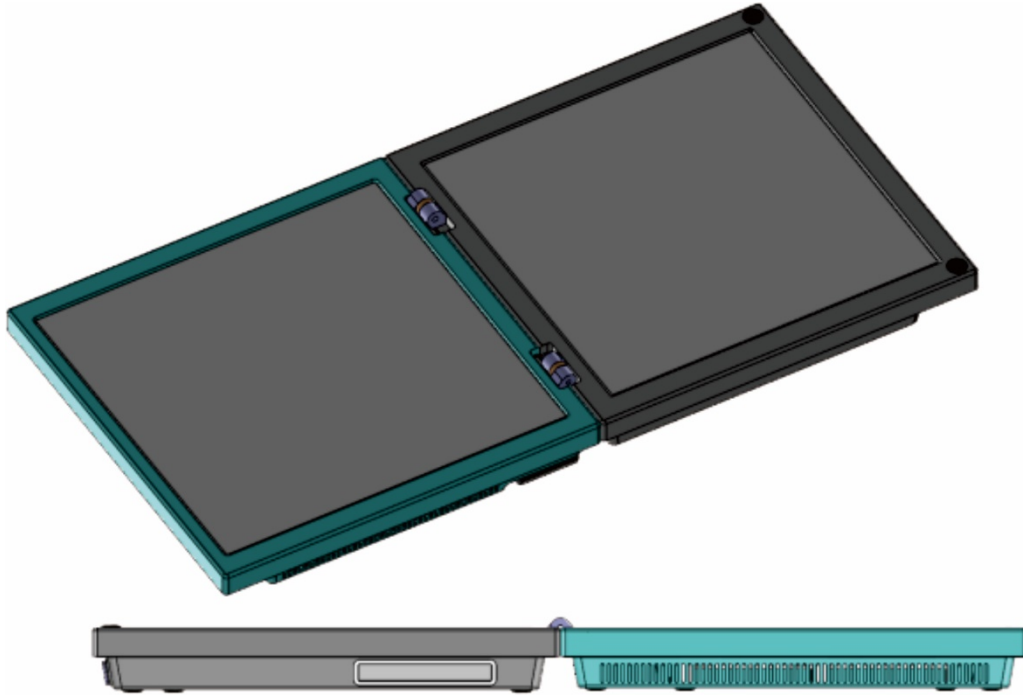
Starwin ESA is highly integrated of ESA, control unit, Up&Down converter and satellite router into one unit under one radome and the wireless access function is also included, which makes the product very easy to deploy and use and make Satcom simple & easy.

China Starwin Science & Technology Co., Ltd.

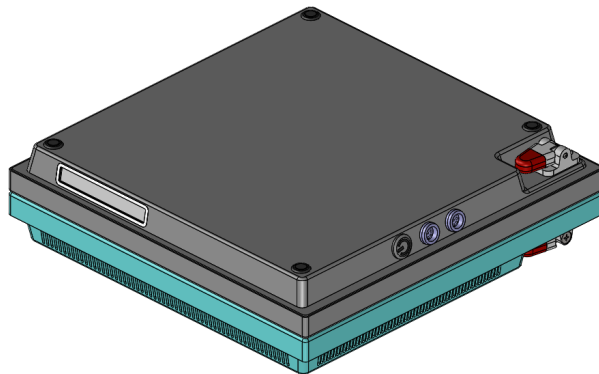
Tel:+8629-88664381,E-mail:sales@starwincom.com,<http://www.starwincom.com>

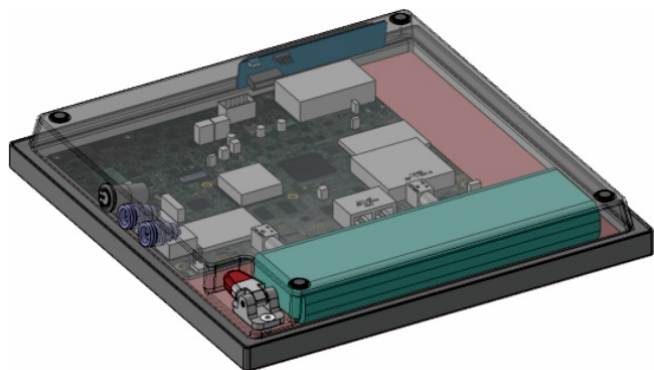
Copyright©2019 Starwin

Open status

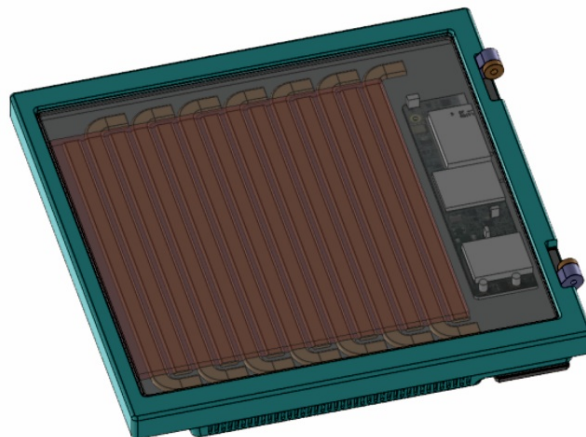


Stow status





Rx



Tx

Key Features:

- High speed tracking: Fully electronically steering satellite beam
- High integration: All in one, phased array, ACU, satellite Modem, Up&Down Converter are integrated in one outdoor unit
- High reliability: Solid State, no moving mechanical parts inside
- Simple Setting up: No need satellite technician for installation, cabling, connection and commission etc.
- Easy Operation: Access satellite broadband in wireless way by smartphone or laptop.
- Wide application: Work for Land (Fixed Platform)-Mobile (Vehicle&Train), Maritime (Vessels) and Aero (Airplane and UAV)
- Lower profile: Smaller size less than 60*12*30cm
- Light weight: Less than 14Kg
- Cost effectiveness: Self-developed low cost multi-channel RF Chipset

China Starwin Science &Technology Co., Ltd.

Tel:+8629-88664381,E-mail:sales@starwincom.com,<http://www.starwincom.com>

Copyright©2019 Starwin

ESA Specification General

Item	Specification	
	Ka Band	Ku Band
Operation Frequency	Rx: 18.0~21.0 GHz Tx: 28.0~31.0 GHz	Rx: 10.75~12.75 GHz Tx: 13.75~14.75 GHz
Polarization	Dual Circular	Dual Circular or Linear
Polarization Isolation	≥25dB	≥30dB
Scan Range	±60°	±60°
Array Scale	Rx: 32*32 Tx: 32*32	Rx: 32*32 Tx: 32*32
Chipset Number	256@RX 256@TX	Rx: 256 Tx: 256
Max. EIRP	47dBw	47dBw
Max. G/T	11dB/K	11dB/K
Dimension	≤55cm*30cm	≤60cm*33cm
Height	≤10cm	≤10cm
Weight	≤15Kg	≤16Kg
Supply DC Voltage	12V or 24V	12V or 24V
Max Power Consumption	≤380w	≤380w